

Interface Masters

TECHNOLOGIES

Innovative Network Solutions

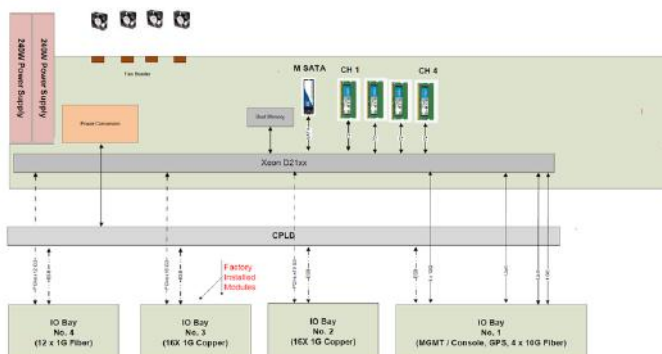
OVERVIEW

Interface Masters presents Tahoe 8308, a modular 1U switch appliance based on **Intel® Xeon® D** System on Chip and managed by an Intel x86 control plane.

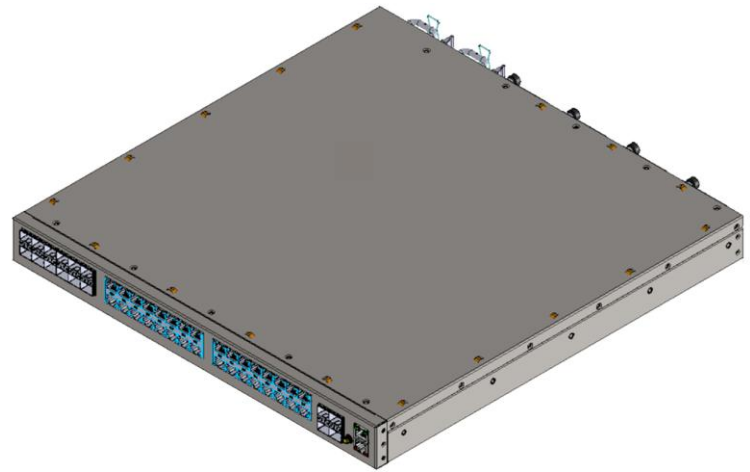
This semi-modular appliance supports four front-facing I/O bays and can be upgraded with any combination of off-the-shelf I/Os. Available I/O modules include a sixteen (16) port 1G copper module, twelve (12) ports 1G fiber module and a management/console I/O with four (4) ports of 10G fiber and GPS. Additional rear-facing I/O modules can be developed based on your design requirements.

Tahoe 8308 is suitable for a wide range of applications including Perimeter Security Appliance (PSA), Software Defined WAN (SD-WAN), Multi-Access Edge Computing (MEC), Artificial Intelligence (AI), Universal Customer Premise Equipment (uCPE), and Network Function Virtualization (NFV). Complete SDK available for customer development.

Interface Masters proudly designs and manufactures all our products in the USA.



Block Diagram of Tahoe 8308



Tahoe 8308 (ISO View)

Product Features

Intel® XEON® D modular security Appliance

- Four front facing I/O bays

Mass Configurable I/O Modules

- 16 ports of 1G Copper
- 12 ports of 1G Fiber
- Management board with 4 ports 10G fiber and GPS
- Any combination, validated on a single system

Dual Redundant Hot-Swappable Power Supplies

- High-efficiency power supplies (AC/DC or DC/DC)

Management Interfaces

- Dedicated RS-232 console port
- Dedicated 10/100/1000 management port

Security

- Standard Trusted Platform Module (TPM)
- Optional security (FIPS 104-2 Level 3, GPS, tamper proofing)

Software

- SDK with complete hardware specific SDK tools for custom development
- Custom development and support

ENVIRONMENTAL	
Operating Temperature	0° to 40 °C (32° to 104°F)
Storage Temperature	-20° - 65°C (-4°F to 149°F)
Operating Humidity	5 to 85%, non-condensing
Airflow	Configuration dependent

DIMENSIONS (Preliminary)		
	Inches	Millimeter
Length	16.95	430.53
Height	1.75	44.45
Width	16.80	426.72

PRELIMINARY POWER CONSUMPTION	
Typical	Maximum
TBD	120W (Estimated)

ORDERING INFORMATION	
Part Number	Description
Tahoe 8308	Intel XEON-D Based Modular Security Appliance with four front-facing I/O Bays.
IM8310	I/O Module: Management Board (Management, Console, GPS and 4 x 1G Fiber).
IM8312	I/O module: 16 x 1G Copper.
IM8314	I/O Module: 12 x 1G Fiber.

CUSTOMIZATION SERVICES

Hardware, Firmware, Linux O/S and application code development services available.



ABOUT INTERFACE MASTERS TECHNOLOGIES, INC.

Interface Masters Technologies is a leading provider of high-speed networking solutions focused on 1/10 /25/40/100/200 Gigabit Ethernet networking solutions. For over 25 years, Interface Masters Technologies has been providing innovative networking solutions with customization services to OEMs, large enterprises and sophisticated end users. Interface Masters Technologies provides Ethernet switches, appliances, server adapter cards with high port density, networking offload and bypass functionality. Company headquarters are located in San Jose, CA with satellite offices in Hong Kong and Europe.

XEON® D is trademark of Intel Corporation.